



Astera Mews

Crescent Road, New Barnet, Hertfordshire



Astera Mews

'ASTERA MEWS' IS AN EXCLUSIVE DEVELOPMENT OF 8 LUXURY SEMI-DETACHED THREE BEDROOM HOMES LOCATED IN NEW BARNET WITH EASY REACH OF NEW BARNET HIGH STREET AND ITS AMENITIES AND TRANSPORT LINKS.

This contemporary gated development has been designed to give each home fabulous living space whilst also offering ample outdoor / garden amenity. These homes have been finished to a high standard with luxury finishes throughout.

Each home has a large living room that flows in to the open plan kitchen diner to the rear which also has bi-folding doors that lead to the patio and rear garden. Each Homes also has a Downstairs guest WC.

The stairs case has glass balustrades to add to the contemporary feel and the first floor landing has a large skylight.

The first floor has three double bedrooms that are bright and spacious. The Principle bedroom also has a beautifully appointed ensuite Shower room. The Family bathroom has also been finished to a high standard with it grey Porcelain tiles and matt black finishes.

The rears gardens all have nice sized patios are laid to lawn and have outdoor electric points and outdoor water taps.

Each home has one allocated parking space with an electric car charging point. There are also some spaces allocated for visitor parking and bicycle storage.



KITCHEN -

- Worktops in polished Artscut Calacatta Oro
- Contemporary Highgloss handleless drawers and Cabinets
- Bosch Built In Static Fridge Freezer Integrated
- Bosch Built In Series 2 Single Oven Stainless Steel
- Bosch Built In Series 2 QuickTherm Ceramic Hob Black Glass
- Elica Era Standard Built In Extractor Hood Silver
- Bosch Built In Series 2 Fully Integrated Dishwasher Integrated

BATHROOMS AND WC-

- Contemporary sanitary ware
- Ultra slim square shower head
- 2 way thermostatic shower valve
- Matt black single tap lever to basin
- Vanity unit under sink
- Wall and floor tiles in porcelain Rial grey and Impe grey
- Shower feature in Barca Perla Decor Tiles
- Solo dry electric towel rail
- Extractor fan
- LED mood lighting

FLOORINGS-

- Living room / Kitchen Diner - Moduleo Impress
- Bedrooms Cashmere Luxe Carpet 25mm Winter Breeze

OTHER KEY FEATURES -

- Underfloor heating
- Mains operated smoke detectors
- Security alarm
- High performance aluminium double glazed lockable windows
- BT, TV & satellite points in principle rooms wall mounted
- Pre-wired for Sky Q
- Recessed downlighters
- Allocated parking to all houses (8 spaces)
- Bicycle store
- Gates security entrance
- ICW 10 year new build warranty

Location - Located approx 0.4 miles of New Barnet Mainline station as well as popular local schools JCoss which is approx 0.5 miles and East Barnet Secondary school which is approx 0.5 miles away. High Barnet (Northern Line) and Cockfosters (Piccadilly Line) are the nearest tube stations and the area is also served by numerous bus routes.



A tall, modern shelving unit with a silver metal frame and glass shelves. It features a bronze tiger figurine on top, several framed photographs, black vases, and decorative spheres. The unit is positioned against the left wall.

A round, silver, textured mirror hanging on the wall. It has a concentric ring pattern and is positioned above the sofa.

A staircase with grey carpeting and a white, curved railing. It leads up from the living area towards the back of the house.

A light grey, L-shaped sofa with several patterned and solid blue and white pillows. It is positioned in the center of the room, facing the coffee table.

A small, round glass side table with a silver metal base. It holds a green reed diffuser, a candle, and a decorative object.

A small, round glass side table with a silver metal base, holding a vase of pink flowers and a small green bowl.

A light grey, round armchair with a patterned pillow, positioned in the corner of the room.

A framed print titled "Theatre de l'Opera" showing a classical building facade.

A framed print titled "Arc du Carrousel" showing a classical archway.

A round glass coffee table with a silver metal base, holding a magazine, a book, and a colorful patterned bowl.

A long, low cabinet with a dark top and light-colored drawers, featuring silver handles. It is positioned against the right wall.







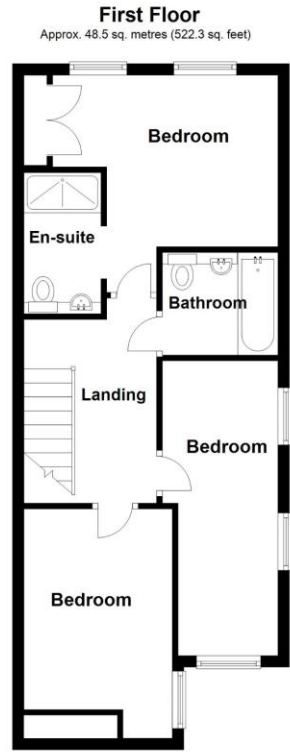
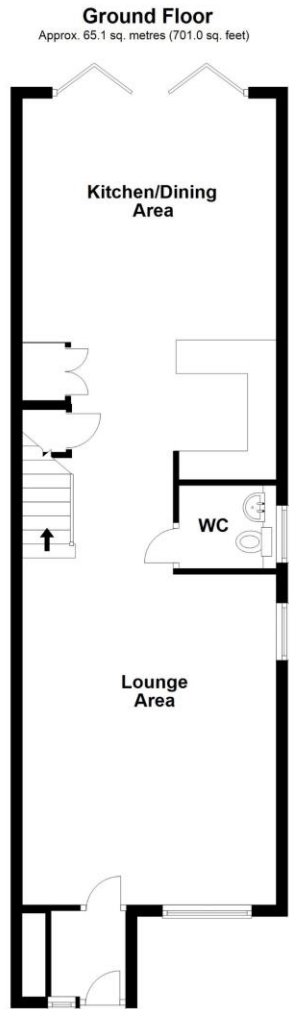






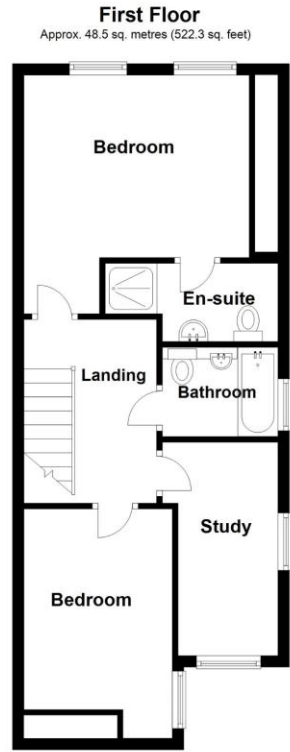
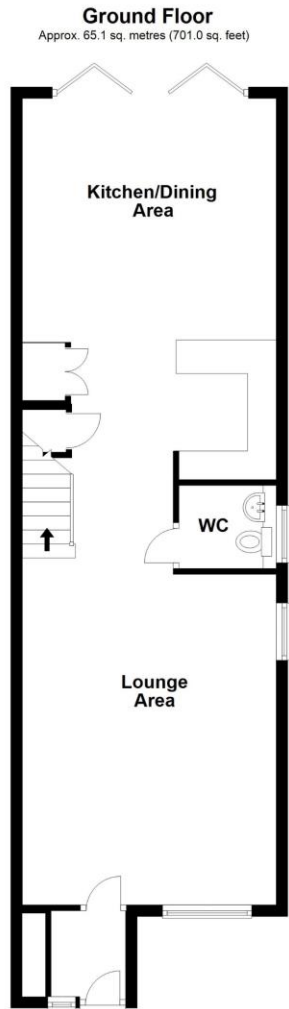






Total area: approx. 113.6 sq. metres (1223.3 sq. feet)

Whilst every attempt has been made to ensure the accuracy of this floor plan, no responsibility is taken for any error, omission or incorrect statement. When a garage outbuilding, garden and/or balcony are shown on the floor plan, their areas are included in the floor square area. The plan is for illustrative purposes and is to be used as such by any prospective purchaser or tenant. Floor Plan prepared by Adrian Bunting 07753375565.
Plan produced using PlanUp.



Total area: approx. 113.6 sq. metres (1223.3 sq. feet)

Whilst every attempt has been made to ensure the accuracy of this floor plan, no responsibility is taken for any error, omission or incorrect statement. When a garage outbuilding, garden and/or balcony are shown on the floor plan, their areas are included in the floor square area. The plan is for illustrative purposes and is to be used as such by any prospective purchaser or tenant. Floor Plan prepared by Adrian Bunting 07753375565.
Plan produced using PlanUp.



Approved site plan CR3-P01

STATONS

www.statons.com



STATONS NEW HOMES

1 HADLEY PARADE
HIGH STREET
BARNET, HERTS
EN5 5SX
020 8441 9555
newhomes@statons.com